

vtech®

V. FLASH™

BRATZ
Fashion
Pixiez™

The Secret Necklace



© MGA

USER'S MANUAL

TM & © MGA
Entertainment, Inc.



Dear Parent,

VTech®, with the introduction of our **V.FLASH™**, offers kids a cool, fun, and educational alternative to the world of violent video games. We know that kids want to play popular video games, and we also understand parents' reluctance to put potentially inappropriate content into their hands. As kids get older they want to be able to play independently, and make choices for themselves, and parents want to feel comfortable that these choices are going to be healthy and beneficial to their kids.

With **V.FLASH™** – an educational video game system designed for kids 6-10 – **VTech®** continues its tradition of providing unique and fun alternatives to the existing video game systems. **V.FLASH™** combines age-appropriate educational content with outstanding 3D graphics, fast-paced game play, real video and pictures, and three unique modes of play to provide a state of the art experience that kids and parents will both love. Also, **V.FLASH™** can play all of your standard music CDs, making it both a cool video game system as well as your own personal stereo!

V.FLASH™ works with a full library of V.DISCS, each of them featuring some of your kids' favorite characters. Best of all, every V.DISCS comes with three modes of play, so your child is free to explore, play and learn in any way that they choose. Game Zone offers fast-paced video game fun, with all the action but none of the violence. Knowledge World features a virtual encyclopedia of pictures, videos and facts. Creative Workshop lets kids show their creative side by making their own animations and custom music.

Best of all, the library of software will continue to grow as **VTech®** seeks to provide parents with an almost endless selection of wholesome video games that meet the individual needs and likes of their children.

At **VTech®** we are proud to provide you with a much-needed solution to the video game dilemma, as well as another innovative way for your child to learn while having fun. We thank you for trusting **VTech®** with the important job of helping your child explore a new world of learning!

Sincerely,

Your friends at **VTech®**

To learn more about **V.FLASH™** and other **VTech®** toys, visit:

www.vtechkids.com

INTRODUCTION

Jade is working as a model for a Charity Jewelry Auction. She's wearing the most expensive necklace in the show—and according to rumor—it's enchanted by a Dark Pixie. Suddenly, the lights go out! When they come back on, a bunch of jewelry is missing—including the necklace Jade was wearing! Who stole the necklace? Could the enchantment rumor be true? Join Jade, Cloe, Sasha and Yasmin on an adventure to get the necklace back from the Pixie World!

GETTING STARTED

I. Choose Game Zone, Bratz World or Creative Workshop

Choose Your Play Mode

Use the joystick to move up or down and select the mode that you want. Press the GREEN button or the ENTER button to make your choice.



Game Zone

Select Game Zone and play a series of games to help the Bratz solve the mystery of the Secret Necklace.

Bratz World

Select Bratz World and you can get the scoop on astrology, fashion and travel, or hear some hot tips about socializing and fitness trends, or take a quiz to learn more about yourself!

Creative Workshop

Select Creative Workshop and use your imagination to help the Bratz make amazing fashion designs or direct your own music video!

Options

To turn the background music on or off, use the joystick to move up or down between "Music On" and "Music Off". Press the GREEN button or the ENTER button to make your choice.



Choose Your Play Mode

When you choose to play in Game Zone, you can select from two ways to play: Adventure Play or Quick Play.

Adventure Play

Choose Adventure Play to join the Bratz on an adventure that takes you through the Game Zone games in order and you'll get to see cool Bratz story videos.

Quick Play

Choose Quick Play to select which Game Zone games you want to play and what order to play them in. Replay the games in Quick Play as often as you want.

2. Choose a New Game or Continue a Saved Game

Game Zone

This option will not be seen if it is your first time playing the game.

After you have completed a game, the **V.FLASH™** system will automatically remember your place and status in the game. Even if you turn the unit **OFF**, as long as you do not take out the V.DISC, the **V.FLASH™** system will keep this record. When you turn the unit back **ON** and select to play Game Zone, you will see the screen at right.



Choose **"Yes"** if you want to continue the game that you started before you turned off your **V.FLASH™**.

Choose **"No"** if you want to start a new game or load a game record from the **V.FLASH™** Memory Card (sold separately).

New Game

Choose New Game to start a new game from the beginning.

Continue Game

To keep playing a game that you have already started, simply turn the unit **ON** and select Adventure Play under the Game Zone menu. A "Continue your last game?" menu will pop up giving you the option to continue the last game that you played. Select **Yes** to continue the last game or **No** to begin a new game or load a game record from the **V.FLASH™** Memory Card (sold separately).

Please note that you can only do this if your V.DISC has not been removed from the **V.FLASH™** unit since you last played.

If you choose not to continue the last game, you will see the screen below.



Load Saved Game

Choose this option to load a saved game from your **V.FLASH™** Memory Card (sold separately). If you do not have a **V.FLASH™** Memory Card inserted into the console, this button will be disabled.

At the next screen, use the joystick to scroll to the game you want to load, and press the **GREEN** button or the **ENTER** button.



Bratz World

There is no record saving or loading feature in Bratz World.

Creative Workshop

Continue Creation

This option will not be seen if it is your first time playing Creative Workshop.

After you have completed a creation, the **V.FLASH™** system will automatically save your creation. The **V.FLASH™** system will keep this record even you turn the unit **OFF**, as long as you do not take this V.DISC out of the **V.FLASH™** unit. When you turn the unit back **ON** and select a Creative Workshop activity, you will see the screen at right. Choose "Yes" if you want to keep working on the creation that you started before you turned off the **V.FLASH™** unit.

Choose "No" if you want to start a new creation or load a creation that you have saved to a **V.FLASH™** Memory Card (sold separately).



New Creation

Choose this to start a new creation from the beginning.

Save Creation

If a **V.FLASH™** external Memory Card (sold separately) is inserted in the **V.FLASH™** system, you can save your creation in the Creative Workshop activities. After you have completed a creation, you can press the **SAVE** button to save your creation. Use your joystick to scroll to any of the slots. Press the **GREEN** button or the **ENTER** button to make your choice.



Load Saved Creation

Choose this to load an existing creation from your **V.FLASH™** Memory Card (sold separately). If you do not have a **V.FLASH™** Memory Card inserted into the console, this button will be disabled.



3. Choose Your Game Settings

Game Zone

The Adventure Play and Quick Play modes each have their own settings on the game selection page.

Adventure Play

When you start Adventure Play, you can select your difficulty level with the "Level" option, the number of players with the "Player" option, which Bratz girl you would like to be with the "Bratz Girl" option, or choose a new outfit with the "Bratz Outfit" option.

Level and Player Screen

Move the joystick up and down to choose your level of difficulty or the number of players. Press the **ENTER** button to confirm your choice. When choosing your level of difficulty, move your joystick to select Easy, Medium or Difficult, and press the **ENTER** button to confirm. When choosing the number of players, move your joystick to select 1 Player or 2 Players, and press the **ENTER** button to confirm.



PLEASE NOTE: The 2-Player option is only available when two **V.FLASH™** controllers are plugged into the **V.FLASH™** unit. Additional **V.FLASH™** controllers are sold separately.

You can press the **RED** button to cancel the setting and start again.

Character Selection Screen

Use the joystick to select the Bratz girl that you want to play as. Press the **GREEN** button or the **ENTER** button to make your choice.



Outfit Selection Screen

Use the joystick to select the outfit that you want. Press the **GREEN** button or the **ENTER** button to make your choice.

After you have completed the first of the games in Adventure Play, you will see the menu screen below when you start the rest of the games. If you're happy with your original game settings, press the **GREEN** button. If you want to change your settings, press the **RED** button. You are able to select a different "Bratz Girl" or "Bratz Outfit" in different games.



Quick Play

If you are happy with the current settings, press the **GREEN** button. If you want to change your settings, press the **RED** button. Then select the "Level," "Player," "Bratz Girl" or "Bratz Outfit" options following the instructions listed above in Adventure Play.



Bratz World

There are no settings required for Bratz World.

Creative Workshop

There are no settings required for Creative Workshop.

4. Start Your Game

Game Zone

For the details of this mode, please refer to the "Game Zone" section below.

Bratz World

For the details of this mode, please refer to the "Bratz World" section below.

Creative Workshop

For the details of this mode, please refer to the "Creative Workshop" section below.

FEATURES

1. HELP Button

When you press the HELP button, you will hear the game instruction again or hints will be given for the current game or question.

2. MENU Button

When you press the MENU button, the game will pause. The "Are you sure you want to exit to the Main Menu?" screen will pop up to make sure you want to quit and go back to the Main Menu. Choose "YES" to leave the game (the unsaved game will be lost) or "NO" to cancel the pop-up screen and keep playing.

3. EXIT Button

When you press the EXIT button, the game will pause. The "Are you sure you want to quit?" screen will pop up to make sure you want to quit. Choose "YES" to leave the game (the unsaved game will be lost) or "NO" to cancel the pop-up screen and keep playing.

ACTIVITIES

Educational Curriculum

Game Zone		Curriculum
Game 1	Jewel Quest	Vocabulary
Game 2	The Secret Path	Language arts
Game 3	Secret Web	Spelling
Game 4	Key Hunt	Logic
Game 5	Dark Cave	Problem solving
Game 6	Break the Spell	Musical rhythm

Bratz World		Curriculum
The Scoop	Astrology	Astrology facts
	Travel	Travel tips
	Fashion	Fashion hints
Hot Tips	Social Tips	Social skills
	Fitness Tips	Fitness advice
Cool Quizzes	What Kind of Beauty Are You?	
	Are You a Social Butterfly?	
	What Does Your Style Say About You?	
	What's Your Workout Style?	

Creative Workshop	Curriculum
Fashion Designer	Creative design
Direct Your Own Music Video	Creative design

GAME ZONE

Game Zone Game Menu Screen

There are six different games to choose from in the Game Zone menu. In Adventure Play, the games are played in order. Press the GREEN button to start or continue an adventure. In Quick Play, you are free to choose the game that you want to play. Move the joystick to select a game and press the GREEN button to make your choice.



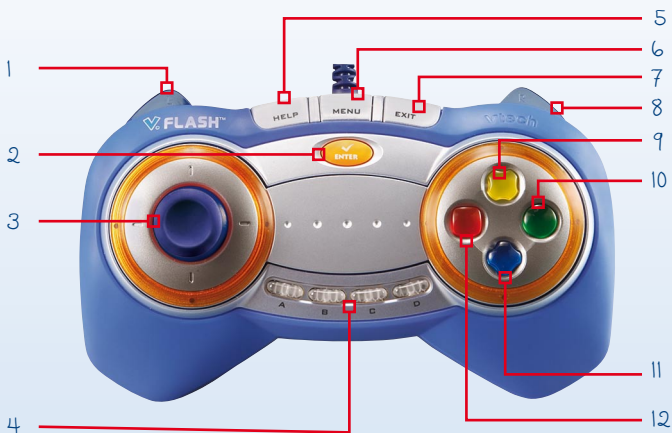
Game Zone Status Bar

In all six Game Zone games, the status bar is always on the screen, showing information about your game.



Player Icon:	Shows the number of players.
Character Icon:	Shows which Bratz girl is playing the game.
Score:	Shows the score.
Game Time:	Shows how much time you have left in the game.
Style Index:	Shows the Bratz girl's Style Index level. If the Style Index is used up, the game will be over. Keep collecting the Bratz icons to keep your Style Index up!
Operation Hints:	Shows some hints for playing the games.

V.FLASH™ Controller Operation



1	L Button	Zooms the camera in or out / switches the web layer in Game Zone Game 3: Secret Web
2	ENTER Button	Confirms choice
3	Joystick	Controls Bratz characters or object movements in the games
4	ABCD Buttons	Change camera movement in Creative Workshop - Direct Your Own Music Video.
5	HELP Button	Repeats game instructions or question
6	MENU Button	Exits the game to Main Menu
7	EXIT Button	Exits the game to Game Zone Menu
8	R Button	Zooms the camera in or out / switches the web layer in Game Zone Game 3: Secret Web
9	Yellow Button	Gives hints to player shows operation hints
10	Green Button	Same function as the ENTER button
11	Blue Button	Shows scene overview in Game Zone Game 1: Jewel Quest
12	Red Button	Cancel

Note: The controller works differently in each game. Please refer to the operation hints below to hear how to operate the controller in each game.

Game Zone 1: Jewel Quest

Follow the text clues on the phone and find the right girl—she may be able to help you to find the thief! When you meet the girl, don't forget to press the GREEN button to confirm.



Curriculum: Vocabulary

Easy Level: Follow the images and text hints to find the right girls.

Medium Level: Follow the text hints to find the right girls.

Difficult Level: Follow more complex text hints to find the right girls.

Game Zone 2: The Secret Path

Find your way along a Secret Path in the Pixie World. Fly with the Bratz and pick the correct letters to spell different flower names. Move the joystick to choose which direction you want to move in and then press the GREEN button to fly.



Curriculum: Language Arts

Easy Level: Collect the missing letters to spell short flower names.

Medium Level: Collect the missing letters to spell longer flower names.

Difficult Level: Collect the missing letters to spell more complex flower names.

Game Zone 3: Secret Web

You have to break through the Secret Web! Collect letter beads to spell flower names by swapping neighboring beads in the web to make a line of 4 matching colored beads. Press the GREEN button to switch the web layer and use the joystick to move.



Curriculum: Spelling

Easy Level: The web is filled with beads in 4 different colors.

Medium Level: The web is filled with beads in 5 different colors.

Difficult Level: The web is filled with beads in 6 different colors.

Game Zone 4: Key Hunt

To open the Dark Pixie's cave door, roll the keystone out of the maze box. Move the joystick to move the maze box and roll the keystone to the exit.



Curriculum: Logic

Easy Level: Maze moves at a slow speed.

Medium Level: Maze moves at a moderate speed.

Difficult Level: Maze moves at a fast speed.

Game Zone 5: Dark Cave

The Dark Pixie's cave is getting darker and darker! Help the Bratz collect the enchanted jewels scattered by the Dark Pixie—they will light up the cave for a short period of time. Use the joystick to move, and press the GREEN button to jump.



Curriculum: Problem Solving

Easy Level: Simple gemstone names

Medium Level: Longer gemstone names

Difficult Level: More complex gemstone names

Game Zone 6: Break the Spell

Look for the color icon that lights up. When the highlighted shape surrounding the icon shrinks down to the exact size of the icon, hit that color button on your controller.



Curriculum: Musical Rhythm

Easy Level: Color buttons will highlight infrequently.

Medium Level: Color buttons will highlight frequently.

Difficult Level: Color buttons will highlight very frequently.

Saving Game Status

Your game status will be saved automatically in the **V.FLASH™** system after you reach a checkpoint or complete a game.

You can also save your game on a **V.FLASH™** Memory Card (sold separately and subject to availability) after a game has been completed. You will see a "Game Saved" screen. You can save up to three game records. You can also overwrite your existing records. If there is not enough memory on the Memory Card, you will need to delete some files from it. Please refer to the **V.FLASH™** main console instruction manual for details.



CREATIVE WORKSHOP

Creative Workshop Main Menu Screen

The Creative Workshop main menu features two creative activities. Use the joystick to select an activity and press the GREEN button to play.



Fashion Designer

Select a Bratz girl and help her design a stylin' top. Select any of the cool fashion elements in the studio and you are on your way to being a fashion designer!

Press the color buttons according to the instructions below to design your top.



Color

Press the RED button to change the colors of your top. Press the GREEN button to confirm. Move the joystick up or down to select the color. Press the GREEN button to confirm.



Decoration

Press the **YELLOW** button to choose decorations for your top. Press the **L** or **R** button select a decoration tray. When you see a decoration that you like, move the joystick to select it and press the **YELLOW** button. If you don't want this decoration, press the **YELLOW** button again to place it back in the tray. Use the joystick to select a cool position to put the decoration and press the **BLUE** button to place it. If you don't like the decoration after putting it on the top, press the **RED** button to undo this step. Press the **GREEN** button to confirm all your decoration choices.



Try It On

Press the **GREEN** button to try on your top. A Bratz girl will model your design and show it off in style!



Direct Your Own Music Video

Select a Bratz girl and make a cool music video. Get ready to rock out!

Start Your Music Video

Press the color buttons according to the instructions below to make your music video.



Step 1: Choose Cool Music

Press the **L** or **R** button to choose your music. Move the joystick to select a song and press the **GREEN** button to confirm your choice.



Step 2: Select a Stylin' Stage

Press the **YELLOW** button to choose a stage. Move the joystick to select the stage and press the **GREEN** button to confirm your choice.



Step 3: Decide on Dance Steps

Press the **BLUE** button to choose your dance steps. Move the L or R button to select the dancing steps. If you're happy with these dance steps, move the joystick left or right to select the choreography you want. Press the **BLUE** button to add. If you have completely finished the choreography, press the **GREEN** button. If you don't like the choreography so far, press the **RED** button to cancel all your dance steps.



Step 4: Start Recording

Press the **RED** button to start recording. Use the buttons onscreen to add special effects to your music video. When the recording is finished, press the **GREEN** button to watch the video again!

Remark: Please refer to the section "Continue or Load Game" for instructions on how to save your creation on your **V.FLASH™** Memory Card (not included and sold separately).



BRATZ WORLD

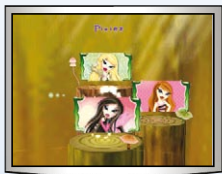
Bratz World Menu

In the Bratz World menu, you can choose either to read one of the topics or take a cool quiz. Use the joystick to move through your options and press the **GREEN** button to confirm your choice.



Bratz World: Subtopic and Entry Menu

After you have selected a topic, you can explore different, cool subtopics and entries. Use the joystick to scroll to an entry and press the GREEN button to read facts about that entry.



Bratz World: Fact Screen

In the fact screen, you can read cool facts about the entry you have chosen. Use the joystick to scroll left or right to the onscreen arrow buttons. This is how you can move to the next or the previous fact. If you press the GREEN button, the fact will be read aloud. If there is a video, press the BLUE button to see it. If you want to choose a new entry, you can press the RED button to go back to the Entry Screen.



AGTA Stock Photography Collection

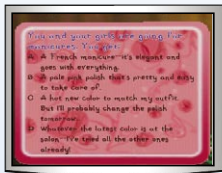
Bratz World: Cool Quizzes Menu

In the Cool Quizzes menu, you can take different quizzes to learn more about yourself and the Bratz. Use the joystick to scroll left or right to select a quiz and press the GREEN button to confirm your choice.



Bratz World: Quiz Content and Result Screen

To start the quiz, read the question and press one of the A, B, C or D buttons to select your answer. After you have finished the quiz, check out your results!



CARE & MAINTENANCE

1. Keep your **V.FLASH™** console unit and V.DISC case clean by wiping them with a slightly damp cloth. Never use solvents or abrasives.
2. Keep them out of direct sunlight and away from direct sources of heat and humidity.
3. Unplug the AC adaptor when not using it.
4. Avoid dropping the **V.FLASH™** console unit or V.DISCs. Never try to dismantle them.
5. Always keep the **V.FLASH™** console unit and V.DISCs away from water.
6. This disc is **VTech®** formatted software and is intended for use with the **VTech® V.FLASH™** Home Edutainment System only. If the disc is used with other devices, damage to the disc or to the device may result.
7. A **V.FLASH™** Memory Card may be required for saving certain portions of the game. The Memory Card is sold separately. Refer to the **V.FLASH™** main console User's Manual for full details.
8. If paused, images may be displayed on the TV screen for an extended period of time, and a faint image may be left permanently on the screen.
9. Do not open the plastic V.DISC case, as this may result in warping or other damage to the disc.
10. Do not use cracked or deformed audio discs or discs that have been repaired with adhesives as these may cause system damage or malfunction.

CD CLEANING PROCEDURE

In case the data side (bottom side) of the V.DISC needs to be cleaned, please follow the following procedure:

1. Lay the V.DISC on a flat surface with the bottom side facing up
2. While pushing the little latch, pull down the disc door as illustrated.
3. Clean the CD only with recommended methods for cleaning other standard CDs.
4. After cleaning, release the disc door, and make sure it returns to the original position.



WARNING

A very small percentage of the public, due to an existing condition, may experience epileptic seizures or momentary loss of consciousness when viewing certain types of flashing colors or patterns, especially on television. When using headphones, do not turn the volume up before putting the headphones on. Also, do not listen at loud volume levels for extended periods of time. Stop using the system immediately if you experience any of the above symptoms. If the condition persists, consult a doctor.

This product requires an undisturbed environment to operate properly. Make sure it is placed on a hard flat surface (carpet is not recommended) with sufficient space between the product and other items.

Do not tap or hit the product while it is operating.

Do not lift or move the product during operation.

Do not press or sit on the V.DISC.

TROUBLESHOOTING

If you have a problem that cannot be solved by using this manual, we encourage you to visit us online or contact our Consumer Services Department with any problems and/or suggestions that you might have. A support representative will be happy to assist you.

Before requesting support, please be ready to provide or include the information below:

- The name of your product or model number. (The model number is typically located on the back or bottom of your product.)
- The specific problem you are experiencing.
- The actions you took right before the problem occurred.

Internet: www.vtechkids.com

Phone: 1-800-521-2010 in the U.S. or 1-877-352-8697 in Canada

OTHER INFO

DISCLAIMER AND LIMITATION OF LIABILITY

VTech® Electronics North America, L.L.C. and its suppliers assume no responsibility for any damage or loss resulting from the use of this handbook. **VTech® Electronics North America, L.L.C.** and its supplies assume no responsibility for any loss or claims by third parties that may arise through the use of this software. **VTech® Electronics North America, L.L.C.** and its suppliers assume no responsibility for any damage or loss caused by deletion of data as a result of malfunction, dead battery, or repairs. Be sure to make backup copies of important data on other media to protect against data loss.

Company: **VTech® Electronics North America, L.L.C.**

Address: 1155 West Dundee Rd, Suite 130, Arlington Heights, IL 60004 USA

Phone: 1-800-521-2010 in the U.S. or 1-877-352-8697 in Canada

NOTE:

This equipment has been tested and found to comply with the limits for a Class B digital device, pursuant to Part 15 of the FCC Rules. These limits are designed to provide reasonable protection against harmful interference in a residential installation. This equipment generates, uses and can radiate radio frequency energy and, if not installed and used in accordance with the instructions, may cause harmful interference to radio communications. However, there is no guarantee that interference will not occur in a particular installation. If this equipment does cause harmful interference to radio or television reception, which can be determined by turning the equipment off and on, the user is encouraged to try to correct the interference by one or more of the following measures:

- Reorient or relocate the receiving antenna.
- Increase the separation between the equipment and receiver.
- Connect the equipment into an outlet on a circuit different from that to which the receiver is connected.
- Consult the dealer or an experienced radio/TV technician for help.

Caution: Changes or modifications not expressly approved by the party responsible for compliance could void the user's authority to operate the equipment.

DATA FROM KNOWLEDGE WORLD

All rights reserved. No part of this publication may be reproduced, stored in a retrieval system, or transmitted in any way or by any means, electronic, mechanical, photocopying, recording or otherwise, without the prior written permission of the copyright holder.

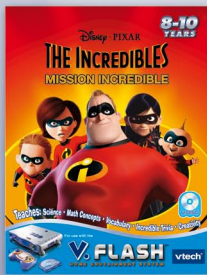
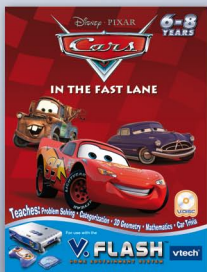
IMPORTANT LEGAL INFORMATION

Copying of any video game for any **V.FLASH™** system is illegal and is strictly prohibited by domestic and international intellectual property law. "Back-up" or "archival" copies are not authorized and are not necessary to protect your software. Violators will be prosecuted.

This video game is not designed for use with any authorized copying device or any unlicensed accessory. Use of any such device will invalidate your **V.FLASH™** product warranty. **VTech®** is not responsible for any damage or loss caused by the use of any such device.

This instruction manual and other printed materials accompanying this game are protected by domestic and international intellectual property laws.

V. FLASH™



© Disney/Pixar



© 2007 VTech
Made in China

91-02211-032-000